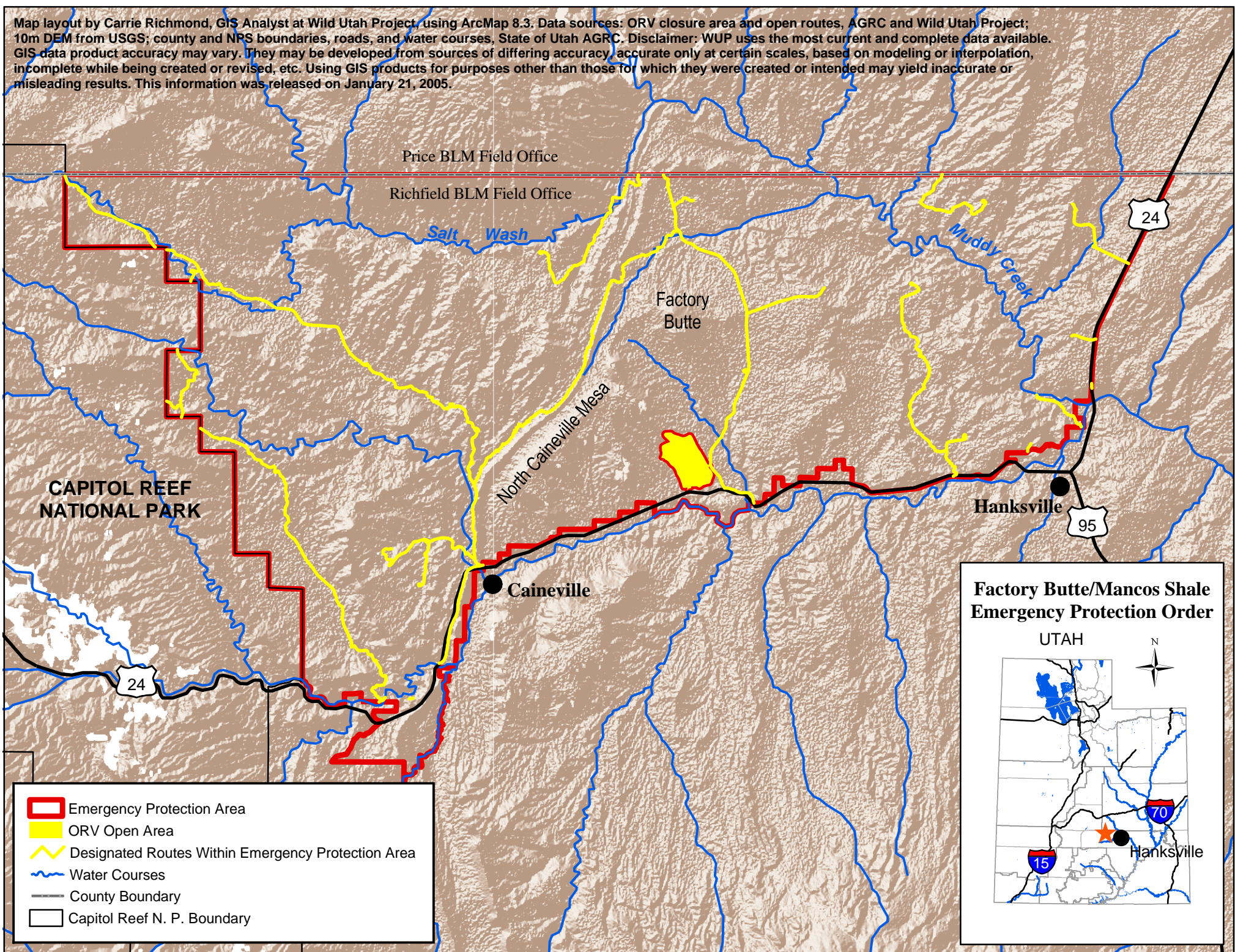


Map layout by Carrie Richmond, GIS Analyst at Wild Utah Project, using ArcMap 8.3. Data sources: ORV closure area and open routes, AGRC and Wild Utah Project; 10m DEM from USGS; county and NPS boundaries, roads, and water courses, State of Utah AGRC. Disclaimer: WUP uses the most current and complete data available. GIS data product accuracy may vary. They may be developed from sources of differing accuracy, accurate only at certain scales, based on modeling or interpolation, incomplete while being created or revised, etc. Using GIS products for purposes other than those for which they were created or intended may yield inaccurate or misleading results. This information was released on January 21, 2005.



- Emergency Protection Area
- ORV Open Area
- Designated Routes Within Emergency Protection Area
- Water Courses
- County Boundary
- Capitol Reef N. P. Boundary

